

PSMC5 antibody - C-terminal region
Rabbit Polyclonal Antibody
Catalog # AI11376**Specification**

PSMC5 antibody - C-terminal region - Product Information

Application	WB, IHC, IP
Primary Accession	P62195
Other Accession	NM_002805 , NP_002796
Reactivity	Human, Mouse, Rat, Rabbit, Zebrafish, Pig, Horse, Bovine
Predicted	Human, Mouse, Zebrafish, Chicken, Horse, Dog
Host	Rabbit
Clonality	Polyclonal
Calculated MW	46kDa kDa

PSMC5 antibody - C-terminal region - Additional Information**Gene ID** 5705**Alias Symbol** S8, p45, SUG1, SUG-1, TBP10, TRIP1, p45/SUG**Other Names**

26S protease regulatory subunit 8, 26S proteasome AAA-ATPase subunit RPT6, Proteasome 26S subunit ATPase 5, Proteasome subunit p45, Thyroid hormone receptor-interacting protein 1, TRIP1, p45/SUG, PSMC5, SUG1

Format

Liquid. Purified antibody supplied in 1x PBS buffer with 0.09% (w/v) sodium azide and 2% sucrose.

Reconstitution & Storage

Add 100 ul of distilled water. Final anti-PSMC5 antibody concentration is 1 mg/ml in PBS buffer with 2% sucrose. For longer periods of storage, store at 20°C. Avoid repeat freeze-thaw cycles.

Precautions

PSMC5 antibody - C-terminal region is for research use only and not for use in diagnostic or therapeutic procedures.

PSMC5 antibody - C-terminal region - Protein Information**Name** PSMC5**Synonyms** SUG1**Function**

Component of the 26S proteasome, a multiprotein complex involved in the ATP-dependent degradation of ubiquitinated proteins. This complex plays a key role in the maintenance of protein

homeostasis by removing misfolded or damaged proteins, which could impair cellular functions, and by removing proteins whose functions are no longer required. Therefore, the proteasome participates in numerous cellular processes, including cell cycle progression, apoptosis, or DNA damage repair. PSMC5 belongs to the heterohexameric ring of AAA (ATPases associated with diverse cellular activities) proteins that unfolds ubiquitinated target proteins that are concurrently translocated into a proteolytic chamber and degraded into peptides.

Cellular Location

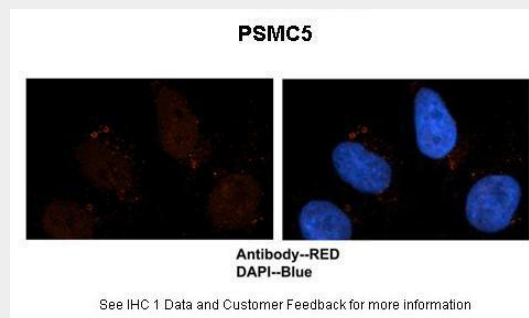
Cytoplasm. Nucleus.

PSMC5 antibody - C-terminal region - Protocols

Provided below are standard protocols that you may find useful for product applications.

- [Western Blot](#)
- [Blocking Peptides](#)
- [Dot Blot](#)
- [Immunohistochemistry](#)
- [Immunofluorescence](#)
- [Immunoprecipitation](#)
- [Flow Cytometry](#)
- [Cell Culture](#)

PSMC5 antibody - C-terminal region - Images



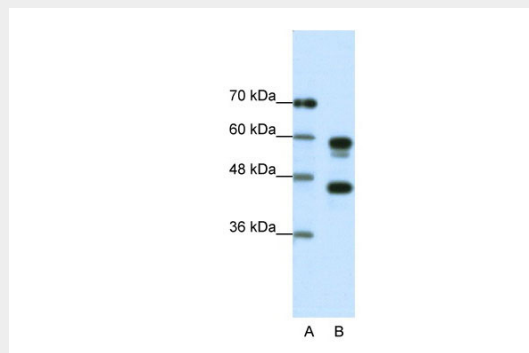
Sample Type : Human brain stem cells

Primary Antibody Dilution : 1:500

Secondary Antibody : Goat anti-rabbit Alexa-Fluor 594 Secondary Antibody Dilution : 1:1000

Color/Signal Descriptions : PSMC5: Red DAPI:Blue

Gene Name : PSMC5 Submitted by : Dr. Yuzhi Chen, University of Arkansas for Medical Science



WB Suggested Anti-PSMC5 Antibody Titration: 1.25µg/ml

ELISA Titer: 1:312500
Positive Control: Jurkat cell lysate

PSMC5 antibody - C-terminal region - References

Inoue, T., et al., (2006) Biochem. Biophys. Res. Commun. 342 (3), 829-834
Reconstitution and Storage: For short term use, store at 2-8C up to 1 week. For long term storage, store at -20C in small aliquots to prevent freeze-thaw cycles.